

BAD THROWS TO FIRST ERASE ONE-HITTER

Errors Cost Ross, Lose Regional 3-1

GOMER — Bob Shetenhelm threw a one-hitter Friday afternoon, but his Ross team fell 3-1 in the opening game of the northwestern regional baseball tournament. Grove City Pleasant View cashed in three unearned runs to advance to today's second game against Rossford.

but Shetenhelm can't blame his mates. Four of the errors were his on throws to first, two after fielding balls and twice on pick-off attempts.

Shetenhelm had a no-hitter going until the sixth inning, last time Pleasant View came to bat. The single proved to allow the go-ahead run in a two-run sixth for the winners.

Ross committed six errors,

* * *



ROSS' RUSS HAGERTY ROUNDS FIRST BASE
Stretches Hit On Centerfielder's Bobble

Ross had given up a run in the second on a walk and a Shetenhelm error.

In the sixth Ron Steinhoff singled, went to second on an over-throw as Shetenhelm attempted a pickoff. He scored when Dennis Brindley errored at third allowing Jim Waples to reach base safely. Waples then scored as Shetenhelm fielded a George

Fannin bunt and overthrew first base.

Ross tied the ball game at 1-1 and threatened to break things open in the fourth inning. Rick Gabel opened with a single and scored on a Del Schultz triple through the hole in left center.

The Little Giants loaded the bases on bunt singles by Brind-

ley and Kris Perry. With one out and the bases loaded Shetenhelm lined to the right fielder. A perfect throw cut down Schultz trying to score and got Pleasant View out of the inning.

Winning pitcher Fannin struck out the final two men to face him in the seventh inning. This boosted his six inning total to six strikeouts, five hits, two walks and the lone run.

Shetenhelm struck out seven, walked two and gave up the one hit. The single and a flyout to centerfield in fourth inning were the only balls hit out of the infield.

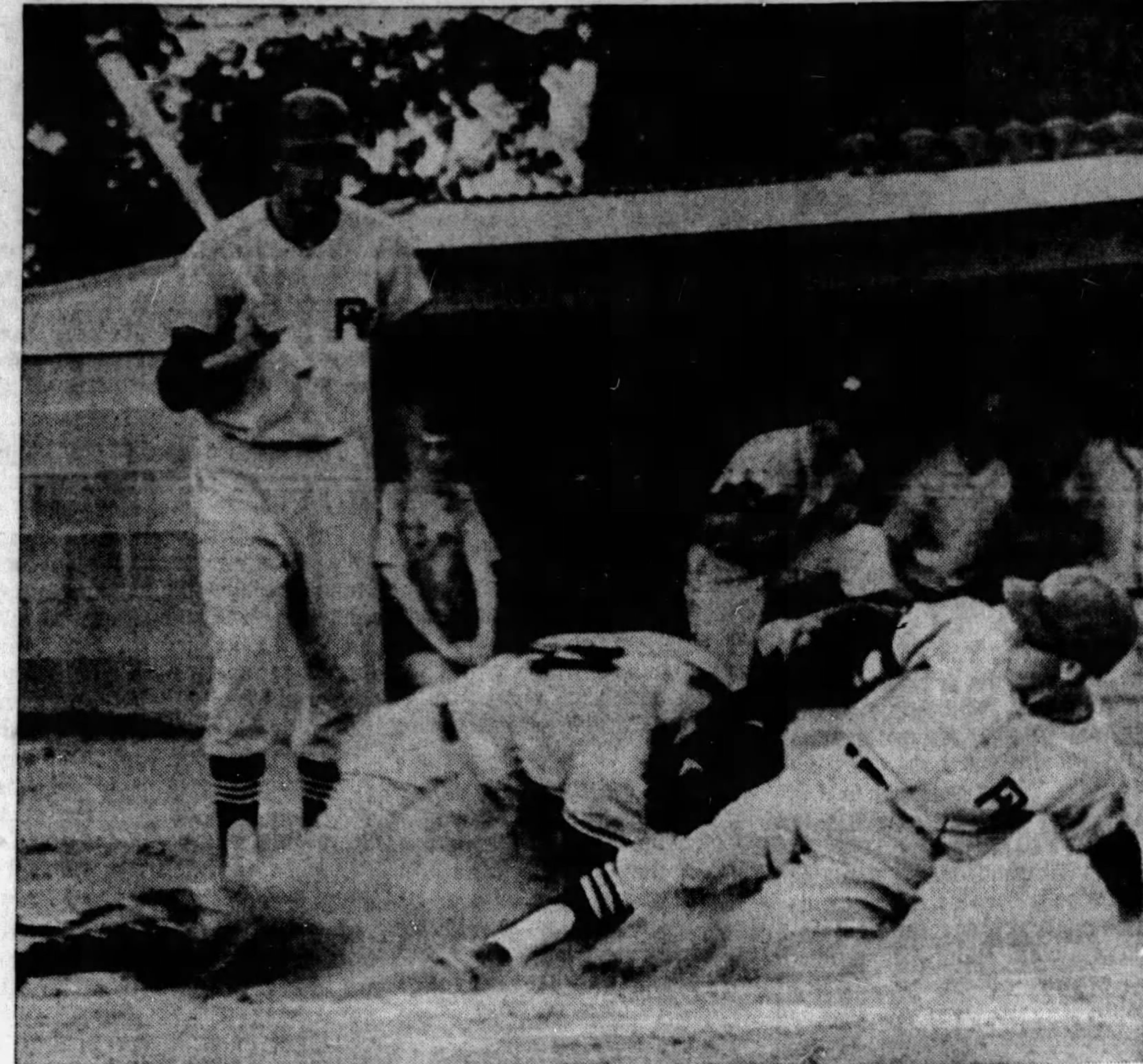
The quickly - played game took only one hour and 25 minutes.

Pleasant View will meet Rossford this afternoon at Gomer. Rossford advanced with a 5-4 extra inning victory over Columbus Bishop Watterson. Rossford won when Ben Bober hit a ninth inning inside-the-park home run.

Watterson scored all its runs in the first inning, Rossford came up with two in the fifth, tied the game in the bottom of the seventh with another pair and then won on Bober's hit to right center with two men out.

Ross ended the season with a mark of 15 wins, five losses. Pleasant View takes a 14-2 record into today's regional final.

ROSS		PLEASANT VIEW	
Thomas	3 0 0	Steinhoff	3 1 1
Hagerty	2 0 1	Waples	2 1 0
Pasch	3 0 0	Stayers	3 0 0
Gabel	3 1 1	Fannin	3 0 0
Schultz	3 0 1	Giddes	3 0 0
Weisz	3 0 0	Ellis	2 0 0
Brindley	2 0 1	Mindigo	1 1 0
Secrist	1 0 0	Kunz	2 0 0
Perry	1 0 1	Ramey	2 0 0
Shetenhelm	2 0 0		
Totals	23 1 3	Totals	21 3 1
Score by innings			
ROSS		000 010 0-1 3 6	
PLEASANT VIEW		010 002 X-3 1 2	



PLEASANT VIEW'S JIM WAPLES IS OUT AT HOME PLATE
Kris Perry Tags Third Out After Throw From Tim Thomas